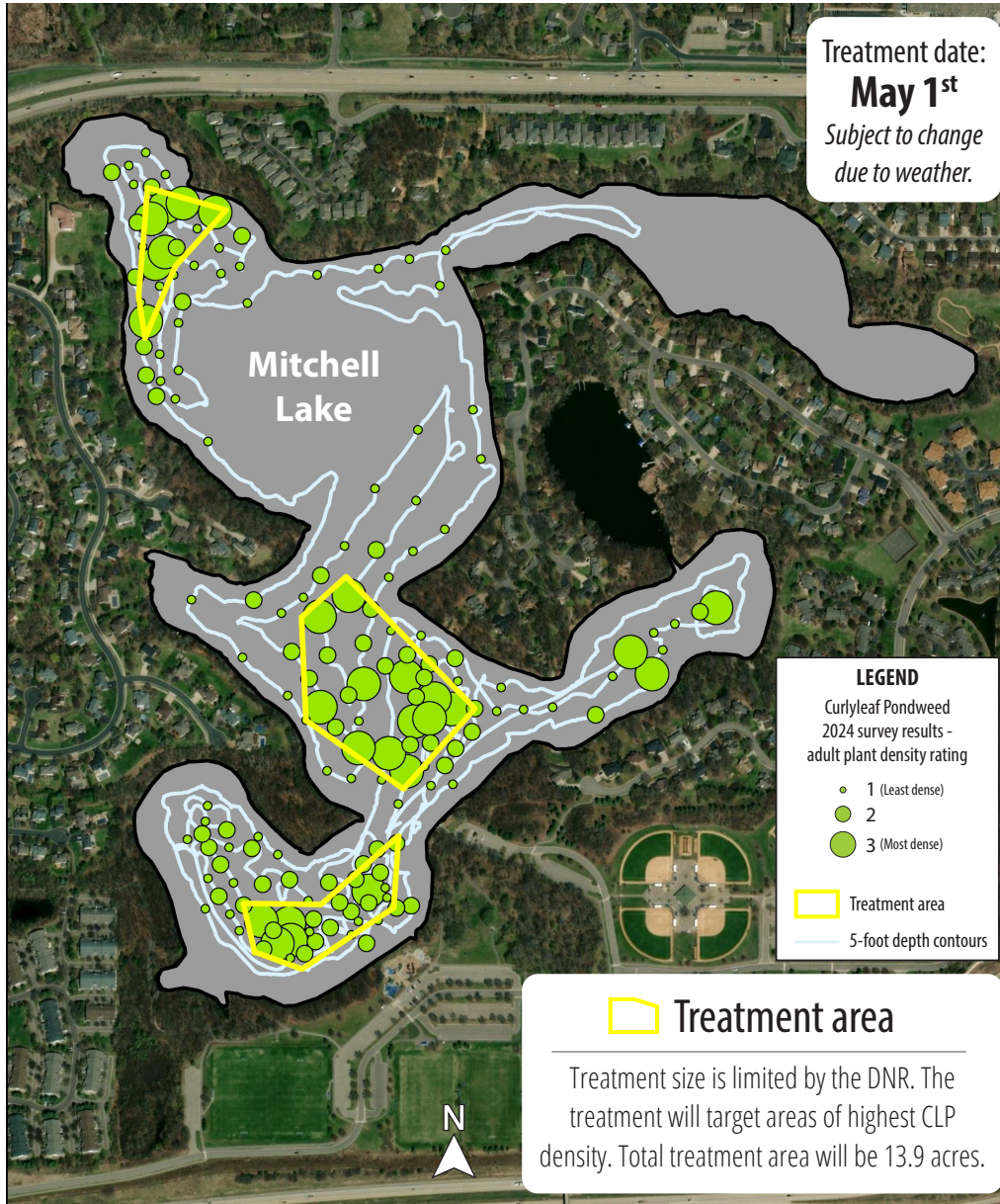


# Mitchell Lake 2024 Herbicide Treatment



RPBCWD received a permit from the Minnesota DNR to control Curly-leaf Pondweed (CLP), an invasive aquatic plant growing in the lake.

The treatment will target areas on the lake with the highest CLP density. Treatment areas are outlined in yellow on the map.

After a Flumioxazin treatment, the DNR recommends not using the water for these activities for these number of days:



**Swimming**  
**No restriction**



**Drinking**  
**No restriction**



**Irrigation**  
**5 days**

**Updates will be posted at**  
**[rpbcwd.org/AIScontrol](https://rpbcwd.org/AIScontrol)**

**RPBCWD** has hired a contractor to apply an aquatic herbicide to control Curly-leaf Pondweed in the lake. *The treatment will occur at NO COST to residents.*

**What:** Herbicide treatment (Flumioxazin)

**Where:** Within designated area(s) on lake (*see map*)

**Why:** To control Curlyleaf Pondweed, an invasive aquatic plant

**When:** **May 1<sup>st</sup>** (subject to change due to weather)



Sign up to be notified by email about lake treatments

**[rpbcwd.org/AIScontrol](https://rpbcwd.org/AIScontrol)**