




RILEY
PURGATORY
BLUFF CREEK
WATERSHED DISTRICT

2020 Calendar

PROTECT. MANAGE. RESTORE.

Managers, Staff & Consultants



Board of Managers

The Riley Purgatory Bluff Creek Watershed District Board of Managers meets on the first Wednesday of each month, 7:00 pm, at the District Office: 18681 Lake Drive East, Chanhassen. Any changes to the schedule are posted on the District website: rpbcwd.org.

Left to right

Larry Koch (Chanhassen)
David Ziegler (Eden Prairie)
Dorothy Pederson (Shorewood)
Dick Ward (Eden Prairie)
Jill Crafton (Bloomington)

Term expires

July 2021
July 2022
July 2020
July 2020
July 2021

Staff

Dr. Claire Bleser
Administrator
952-607-6512

Terry Jeffery
Project & Permit
Manager
952-807-6885

Maya Swope
Education &
Outreach Coord.
952-687-1348

Josh Maxwell
Water Resource
Coord.
952-607-6486

Zach Dickhausen
Water Resource
Tech.
952-607-6036

B Lauer
Education &
Outreach Asstnt.
952-607-6481

Mat Nicklay
Water Resource
Asstnt.
952-687-1018

Amy Bakkum
MN GreenCorps
Member
952-607-6026

Consultants

Scott Sobiech
District Engineer
Barr Engineering
952-832-2755

Smith Partners PLLP
Legal Advisor
612-344-1400

Cover image by Eric Toft, Mitchell Lake.

50 Years of Watershed Protection

The Riley Purgatory Bluff Creek Watershed District was established on July 31, 1969. The District is a local government unit charged with protecting, managing, and restoring water resources. It encompasses all the land that drains into any of the three creeks in its name. At about 50 square miles, it includes parts of seven cities (Bloomington, Chanhassen, Chaska, Deephaven, Eden Prairie, Minnetonka, and Shorewood), and two counties (Carver and Hennepin).

The District is led by residents and water professionals. Five managers (four appointed by the Hennepin County Commissioners and one by Carver) serve three-year terms directing District activities. The District partners with local communities to identify top priorities and plan, implement, and manage efforts to protect clean water. The District works to educate and engage community members in this stewardship. Watershed activities are funded by property tax levies.

A Year of Exploration and Celebration

Throughout 2019, the District celebrated its 50th anniversary with a series of opportunities for our community to explore and celebrate local water resources.

In February, we partnered with Three Rivers Park District and the City of Chanhassen to lead a snowshoeing adventure at the Lake Ann Winter Festival. In June, we worked with local nonprofit Let's Go Fishing to host free boat rides on Lake Riley. August brought our large anniversary celebration, and a chance to highlight and thank the many members of our community who have worked to protect, manage, and restore water resources. In September, we biked 50 miles through the District to celebrate 50 years, and hosted an 8-mile family-friendly ride.

Winter



Spring



Summer



Fall



Each season, the District partnered with local artist Kari Jo Johnson for a community art project designed by Kari Jo and painted by more than 150 members of the community.



Coming together for a healthier Duck Lake

In 2019, the District and the City of Eden Prairie began implementing a community project to engage residents who live in Duck Lake's watershed to take action to protect clean water. The goal of the project was to help 25% of homes in the lake's watershed get involved by installing raingardens, trees, rain barrels, and raingarden-in-a-box planters. These best management practices work together to help capture and filter polluted stormwater before it reaches Duck Lake.

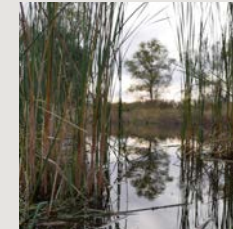
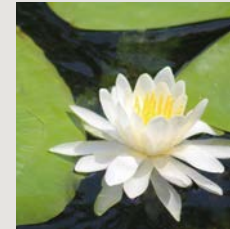
Residents received letters and postcards inviting them to participate, and many responded positively. So far, 39 trees have been installed and 52 rainbarrels have been given to residents. The District and the City will work with contractors to install rain gardens and downspout planters in 2020.

Thank you to all of the members of this community who stepped up and took action to help protect Duck Lake. It takes all of us to protect and manage a healthy landscape!



Photography Contest

Many of the photos in this calendar were taken by members of the community and submitted to our 50th anniversary photography contest. The Citizen Advisory Committee and staff reviewed the photos, and voted to have their favorites featured in this calendar.



Empowering Businesses To Protect Clean Water

One of the many types of continuing education opportunities the District offered in 2019 was a series of Smart Salting Trainings. These trainings help winter maintenance professionals and property managers provide safe roads, sidewalks, and parking lots while limiting road salt use. Less salt on outdoor surfaces means less salt polluting our freshwater resources.

The District took part in the development of the Minnesota Pollution Control Agency's (MPCA) Smart Salting for Property Managers training and was the first organization to host trainings. The District initially hosted two trainings and added two more due to popular demand! Over 100 individuals were certified through these property manager trainings in 2019.

Over the course of 2019, the District partnered with the MPCA to offer four Smart Salting for Parking Lots and Sidewalks trainings, one Smart Salting for Roads training, and four Smart Salting for Property Managers trainings. As we look to 2020, the District hopes to continue building on existing momentum to spread the word, not the salt.

Reflecting on 50 years of protecting, managing, and restoring local water resources. Learn more about our history at rpbcd.org/50years

DISTRICT OFFICE:

18681 Lake Drive East
Chanhassen, MN
55317

CONTACT INFO:

952-607-6512
info@rpbcd.org
www.rpbcd.org



JANUARY

SUNDAY	MONDAY	TUESDAY	WEDNESDAY	THURSDAY	FRIDAY	SATURDAY
Be salt smart What happens to the salt we put down to melt ice? It washes into stormdrains and pollutes local lakes, streams, and wetlands. Spread less salt to help keep our lakes and creeks clean.			1 <i>New Year's Day</i>	2	3	4
5	6	7	8 RPBCWD Board Meeting 7:00 PM, District Office	9	10 ○ Full moon	11
12	13	14	15	16	17	18
19	20 <i>Martin Luther King Jr. Day</i>	21	22	23	24 ● New moon	25 <i>Chinese New Year</i>
26	27 RPBCWD Citizen Advisory Committee Meeting 6:00 PM, District Office	28	29	30	31	




FEBRUARY

SUNDAY	MONDAY	TUESDAY	WEDNESDAY	THURSDAY	FRIDAY	SATURDAY
Gathering data <p>Good decisions are based on good data. District staff monitor local water bodies to determine how healthy they are, identify projects to improve them, and assess how successful those projects are. If you see our sampling team out and about, stop and say hi!</p>						1
2 <i>Groundhog Day</i>	3	4	5 RPBCWD Board Meeting 7:00 PM, District Office	6	7	8
9 ○ Full moon	10	11	12	13	14 <i>Valentine's Day</i>	15
16	17 <i>Presidents' Day</i>	18	19	20	21 <i>Maha Shivaratri</i>	22
23 ● New moon	24 RPBCWD Citizen Advisory Committee Meeting 6:00 PM, District Office	25 <i>Shrove Tuesday/Mardi Gras</i>	26	27	28	29



MARCH

SUNDAY	MONDAY	TUESDAY	WEDNESDAY	THURSDAY	FRIDAY	SATURDAY
1	2	3	4 RPBCWD Board Meeting 7:00 PM, District Office	5	6	7
8 Daylight Saving Time Begins	9 ○ Full moon Purim begins Holi begins	10	11	12	13	14
15	16 RPBCWD Citizen Advisory Committee Meeting 6:00 PM, District Office	17 St. Patrick's Day	18	19 Spring Equinox	20	21
22	23	24 ● New moon	25	26	27	28
29	30	31				

Adopt a storm drain!

You can help keep our lakes and creeks clean by “adopting” a storm drain in your neighborhood. It’s as easy as sweeping up and collecting any leaves, trash, salt, and other debris that have collected around your drain. You can learn more and sign up at adopt-a-drain.org.

Main photo by Patricia J Young (Staring Lake Park).
Insert photo by Eric Toft (Mitchell Lake).



APRIL

SUNDAY	MONDAY	TUESDAY	WEDNESDAY	THURSDAY	FRIDAY	SATURDAY
Protect, manage, restore Protecting healthy and unique resources is an important part of the District's work. For example, did you know that Silver Lake has wild rice? To keep this rare amenity, we need to work to protect and improve Silver Lake.			1 RPBCWD Board Meeting 7:00 PM, District Office	2 <i>Rama Navami</i>	3	4
5	6	7 ○ Full moon	8 <i>Passover begins</i>	9	10	11
12 <i>Easter</i>	13	14	15 <i>Tax day</i>	16	17	18
19	20 RPBCWD Citizen Advisory Committee Meeting 6:00 PM, District Office	21	22 ● New moon <i>Earth Day</i>	23 <i>Ramadan begins</i>	24 <i>Arbor Day</i>	25
26	27	28	29	30		

Main photo by Claire Bleser (Purgatory Creek).
 Insert photo by John Retterath (Mitchell Lake).




MAY

SUNDAY	MONDAY	TUESDAY	WEDNESDAY	THURSDAY	FRIDAY	SATURDAY
--------	--------	---------	-----------	----------	--------	----------

Managing invasives

The District works to manage aquatic invasive species like common carp and curlyleaf pondweed. If left unchecked, these fish and plants can harm water quality and native species. You can help reduce their spread by cleaning your fishing gear after every use!

					1	2
3	4	5	6 RPBCWD Board Meeting 7:00 PM, District Office <i>Cinco de Mayo</i>	7	8	9
10 <i>Mother's Day</i>	11	12 ● New moon	13	14	15	16
17	18 RPBCWD Citizen Advisory Committee Meeting 6:00 PM, District	19	20	21	22	23
24	25 <i>Memorial Day</i>	26 ○ Full moon	27	28 <i>Shavuot</i>	29	30
31						

Main photo by Julia Steidl (Minnetonka).
Insert photo by Eric Toft (Mitchell Lake).



JUNE

SUNDAY	MONDAY	TUESDAY	WEDNESDAY	THURSDAY	FRIDAY	SATURDAY
	1	2	3 RPBCWD Board Meeting 7:00 PM, District Office	4	5 ○ Full moon	6
7	8	9	10	11	12	13
14	15 RPBCWD Citizen Advisory Committee Meeting 6:00 PM, District Office	16	17	18	19	20 <i>Summer Solstice</i>
21 ● New moon <i>Father's Day</i>	22	23	24	25	26	27
28	29	30	<h2>All about algae</h2> <p>Have you noticed mats of long, stringy algae in your lake or pond? Many lakes in the District experience blooms of harmless filamentous green algae. This algae grows on the bottom of the lake when water is clear in early spring. When enough of it grows, it can float up to the top of the lake where it remains for about two weeks. The district monitors phosphorus levels in lakes and designs projects to reduce algae blooms.</p>			

Main photo by Maya Swope (Lower Riley Creek Conservation Area). Insert photo by Kelley Regan (Staring Lake).



JULY

SUNDAY	MONDAY	TUESDAY	WEDNESDAY	THURSDAY	FRIDAY	SATURDAY
Youth programs	Stewardship can start at any age! The District works to engage school groups in hands-on learning. Interested in having us come to your school? Contact us!		1	2	3	4 ○ Full moon <i>Independence Day</i>
	5	6	7	8 RPBCWD Board Meeting 7:00 PM, District Office	9	10
12	13	14	15	16	17	18
19	20 ● New moon RPBCWD Citizen Advisory Committee Meeting 6:00 PM, District Office	21	22	23	24	25
26	27	28	29	30 <i>Eid al-Adha begins</i>	31	

Main photo by John Roemer (Lake Riley).
Insert photo by Eric Toft (Mitchell Lake).



AUGUST

SUNDAY

MONDAY

TUESDAY

WEDNESDAY

THURSDAY

FRIDAY

SATURDAY

Volunteer with us

Are you curious about the work we do? Interested in getting your feet wet and helping us protect clean water? Volunteer with our water resource monitoring crew and explore your watershed in a new way!



						1
2	3 ○ Full moon	4	5 RPBCWD Board Meeting 7:00 PM, District Office	6	7	8
9	10	11 <i>Janmashtami</i>	12	13	14	15
16	17 RPBCWD Citizen Advisory Committee Meeting 6:00 PM, District	18 ● New moon	19	20 <i>Muharram</i>	21	22
23	24	25	26	27	28	29
30	31					

Main photo by Thomas Sanchez (Chanhassen, near Bluff Creek).
Insert photo by Kelley Regan (Red Rock Lake).



SEPTEMBER

SUNDAY	MONDAY	TUESDAY	WEDNESDAY	THURSDAY	FRIDAY	SATURDAY
	1	2 ○ Full moon RPBCWD Board Meeting 7:00 PM, District Office	3	4	5	
6	7 <i>Labor Day</i>	8	9	10	11	12
13	14	15	16	17 ● New moon	18 <i>Rosh Hashana</i>	19
20	21 RPBCWD Citizen Advisory Committee Meeting 6:00 PM, District Office	22 <i>Fall Equinox</i>	23	24	25	26
27 <i>Yom Kippur</i>	28	29	30	<h2>Plant for pollinators!</h2> <p>Pollinators are a crucial part of a healthy environment. Populations of pollinators, such as bees and butterflies, are in decline. You can help by planting a pollinator garden or bee-friendly lawn. Such long-rooted native plants are good for pollinators and water too!</p>		



OCTOBER

SUNDAY	MONDAY	TUESDAY	WEDNESDAY	THURSDAY	FRIDAY	SATURDAY
<p>Slippery slopes Do you live on a steep slope? Slopes are prone to erosion, so it is important to maintain a healthy plant community to hold soil in place. Don't dump leaves and grass clippings on your slope. They smother vegetation and promote erosion.</p>				<p>1 ○ Full moon</p>	<p>2 <i>Sukkot begins</i></p>	<p>3</p>
<p>4</p>	<p>5</p>	<p>6</p>	<p>7 RPBCWD Board Meeting 7:00 PM, District Office</p>	<p>8</p>	<p>9 <i>Shmini Atzeret begins</i></p>	<p>10 <i>Simchat Torah begins</i></p>
<p>11</p>	<p>12 <i>Indigenous People's Day Columbus Day</i></p>	<p>13</p>	<p>14</p>	<p>15</p>	<p>16 ● New moon</p>	<p>17 <i>Navaratri begins</i></p>
<p>18</p>	<p>19 RPBCWD Citizen Advisory Committee Meeting 6:00 PM, District</p>	<p>20</p>	<p>21</p>	<p>22</p>	<p>23</p>	<p>24</p>
<p>25 <i>Vijayadashami</i></p>	<p>26</p>	<p>27</p>	<p>28 <i>Mawlid al-Nabi begins</i></p>	<p>29</p>	<p>30</p>	<p>31 ○ Full moon <i>Halloween Dia de los Muertos begins</i></p>

Main photo by Maya Swope (Wetlands near Mitchell Lake).
Insert photo by John Roemer (Lake Riley).



NOVEMBER

SUNDAY	MONDAY	TUESDAY	WEDNESDAY	THURSDAY	FRIDAY	SATURDAY
1 <i>Daylight Savings Time Ends</i>	2	3 <i>Election Day</i>	4 RPBCWD Board Meeting 7:00 PM, District Office	5	6	7
8	9	10	11 <i>Veteran's Day</i>	12	13	14 ● New moon <i>Diwali</i>
15	16 RPBCWD Citizen Advisory Committee Meeting 6:00 PM, District Office	17	18	19	20	21
22	23	24	25	26 <i>Thanksgiving</i>	27	28
29	30 ○ Full moon 	<h2>Supporting educators</h2> <p>Teachers do important work in our communities, and we want to support them! The District offers trainings, grants, kits, and in-classroom resources each year to help grow water education.</p>				



DECEMBER

SUNDAY	MONDAY	TUESDAY	WEDNESDAY	THURSDAY	FRIDAY	SATURDAY
		1	2	3	4	5
6	7	8	9 RPBCWD Board Meeting 7:00 PM, District Office	10 <i>First Day of Chanukah</i>	11	12
13	14 ● New moon	15	16	17	18	19
20	21 RPBCWD Citizen Advisory Committee Meeting 6:00 PM, District Office <i>Winter Solstice</i>	22	23	24	25 <i>Christmas Day</i>	26 <i>Kwanzaa</i>
27	28	29 ○ Full moon	30	31		

Conserve groundwater

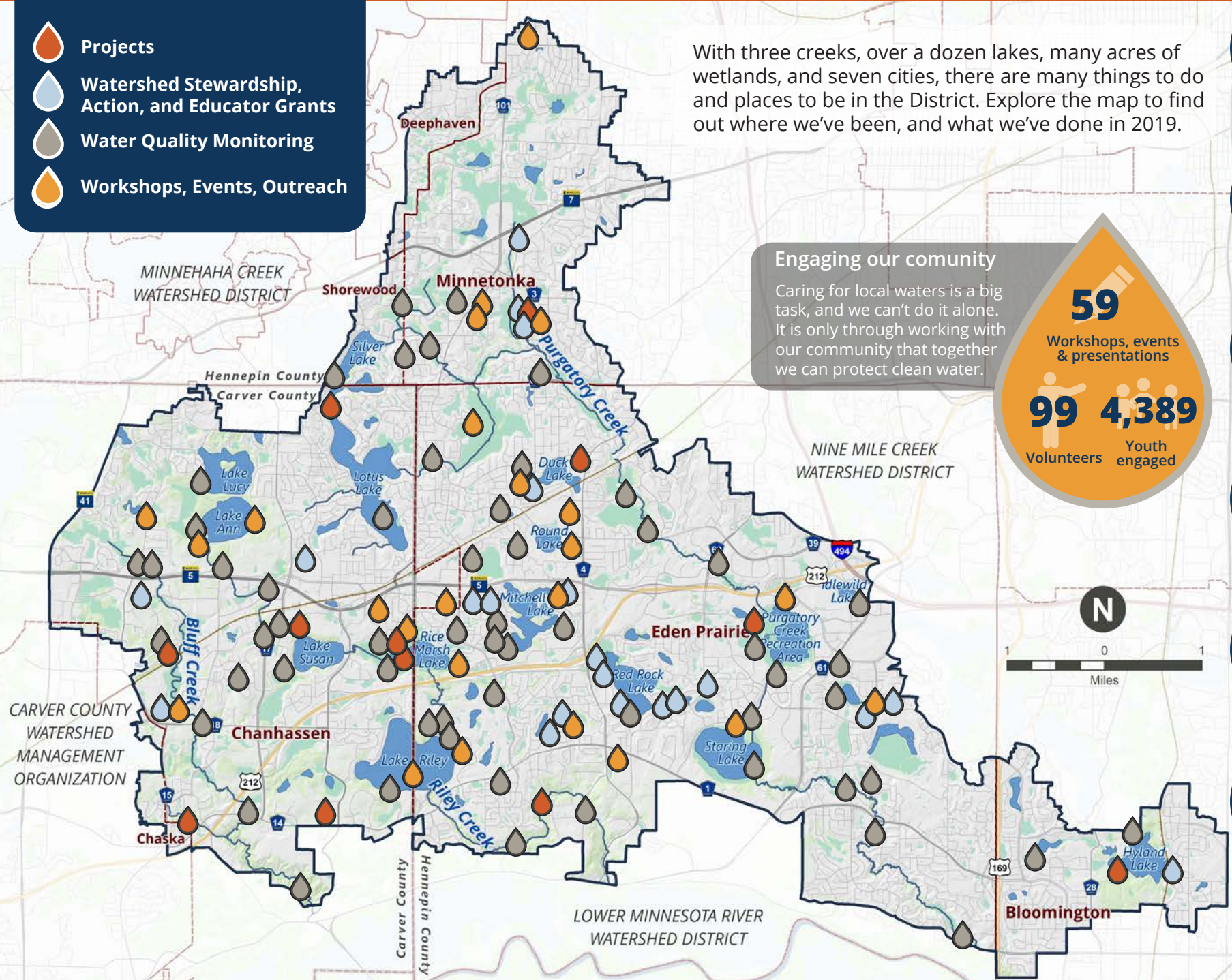
Did you know: water from our taps comes from aquifers deep underground. It is a limited resource, and you can join us in protecting and conserving it. Turf grass alternatives like fescues require less water. When you do need to water your lawn, consider using rainwater from a rain barrel or cistern!

Main photo by Patricia J Young (Staring Lake).
Insert photo by Claire Bleser (Staring Lake).

2019 AT A GLANCE

-  Projects
-  Watershed Stewardship, Action, and Educator Grants
-  Water Quality Monitoring
-  Workshops, Events, Outreach

With three creeks, over a dozen lakes, many acres of wetlands, and seven cities, there are many things to do and places to be in the District. Explore the map to find out where we've been, and what we've done in 2019.



Engaging our community

Caring for local waters is a big task, and we can't do it alone. It is only through working with our community that together we can protect clean water.

59
Workshops, events & presentations

99 Volunteers **4,389** Youth engaged

58
Monitoring sites

28
Grants Awarded

12
Active Projects

40
Permits Issued

75
Thousands of \$ in grants received

36
Partner Organizations



CARVER COUNTY
WATERSHED
MANAGEMENT
ORGANIZATION